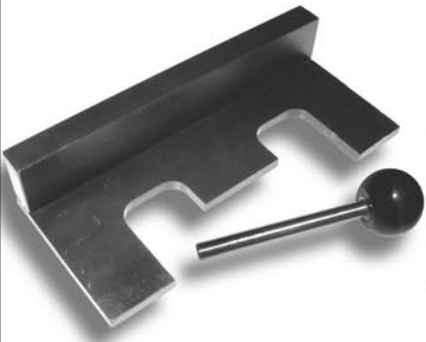


VA 6014-A**VW TDI Timing Kit:**

Needed for the crucial task of aligning the cam shaft with the Bosch Diesel injection pump. This two piece lock plate and alignment pin allows the technician for factory correct and trouble free installations every time.

Applicable: VW T.D.I. engines.

VA 6038**Audi Cam Securing & Alignment Jigs:**

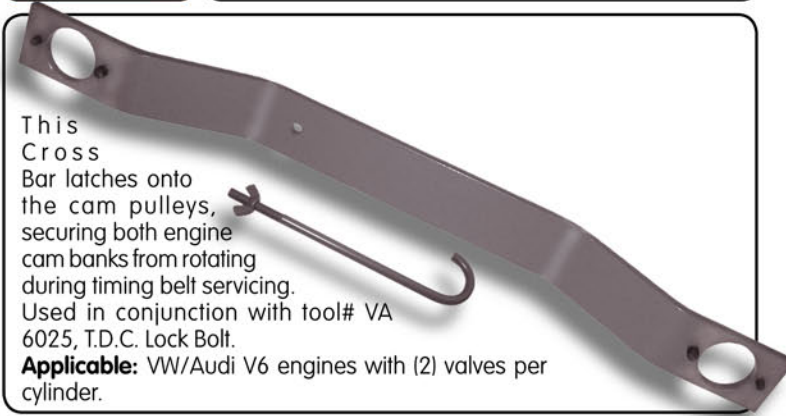
These factory correct Jigs are adjustable and essential to properly secure and align Intake / Exhaust camshafts. Used in conjunction with tool# VA 6036, T.D.C. Lock Bolt.

Applicable: Audi V6, 3.0L engines with (5) valves per cylinder; A4 '02-'05 & A6 '02-'04.

VA 6033**VW Cam Shaft Ruler:**

This special service tool is critical for the task of correct cam shaft alignment during assembly or adjusting of cams.

Applicable: VW models equipped with a VR-6 engine.

VA 6027**VW/Audi Cam Shaft Securing Bar:**

This Cross Bar latches onto the cam pulleys, securing both engine cam banks from rotating during timing belt servicing. Used in conjunction with tool# VA 6025, T.D.C. Lock Bolt.

Applicable: VW/Audi V6 engines with (2) valves per cylinder.

VA 6025**VW/Audi T.D.C. Lock Pin:**

Needed to Lock the Crank Shaft at T.D.C.

Applicable: VW/Audi V6 & V8 engines.

VA 6028**VW/Audi Cam Shaft Securing Bar:**

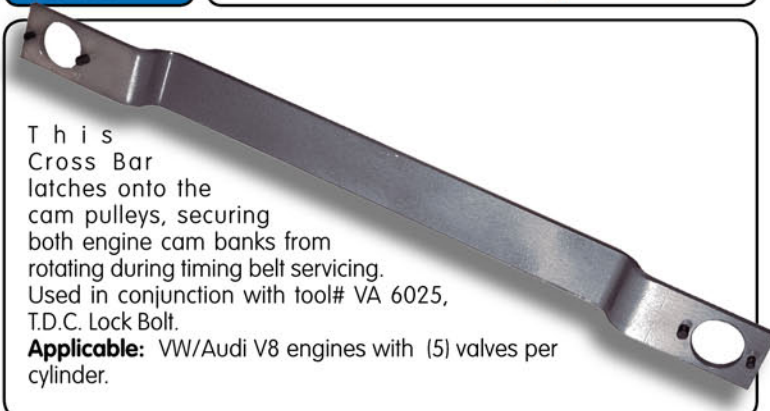
This Cross Bar latches onto the cam pulleys, securing both engine cam banks from rotating during timing belt servicing. Used in conjunction with tool# VA 6025, T.D.C. Lock Bolt.

Applicable: VW/Audi V6 engines; 2.7L & 2.8L engines with (5) valves per cylinder.

VA 6036**Audi T.D.C. Lock Pin:**

Needed to Lock the Crank Shaft at T.D.C.

Applicable: Audi V6, 3.0L engines with (5) valves per cylinder.

VA 6029**VW/Audi Cam Shaft Securing Bar:**

This Cross Bar latches onto the cam pulleys, securing both engine cam banks from rotating during timing belt servicing. Used in conjunction with tool# VA 6025, T.D.C. Lock Bolt.

Applicable: VW/Audi V8 engines with (5) valves per cylinder.